

Datsun Pickup

Fast Freight



Your kind of right of way.

Lots of fast freight trains are called by exotic names like "Pacific Zip" and "Super C." We just call ours "Li'l Hustler." It hustles your work and play loads to your destinations. Riding on 14 years of small truck experience, Li'l Hustler does it better than ever for '74.

First, there's a bigger engine; 1800cc's of low speed torque, high speed horses for minimum maintenance, maximum durability and excellent gas mileage.

The all-steel bed measures six by four and one-half feet. Total passenger and payload capacity is over 1,400 pounds. A new, smooth-riding rear suspension, and front torsion bar suspension handle the weight.

We certainly didn't forget the most important part of the cargo: you. The indented contoured bench seat allows easy operation of the gearshift. The quick-acting 2-speed heater/defroster handles winter; a multi-vent power-flow fresh air system takes care of summer. Or you can opt for factory approved air conditioning installed by any Datsun dealer.

Test drive the standard 4-speed stick or optional automatic transmission. Eyeball the sleek, look-again lines, the white sidewall tires on wide steel rims. Ease down on the power-assist brakes. Load it for bear and pour on the coal.

The new Li'l Hustler, plush cab to half-ton caboose, one heck of a great way to run a railroad!





Any more extras would be feather-bedding.

To the hauling basics, Datsun adds lots of luxury, lots of finely engineered safety features.

Control Center. An under-dash package area is big enough for flashlights, purses and all the stuff that used to fall on the floor. There's also a latching glove box in the dash. Gauges, warning lights and controls are oriented for visibility and easy operation.



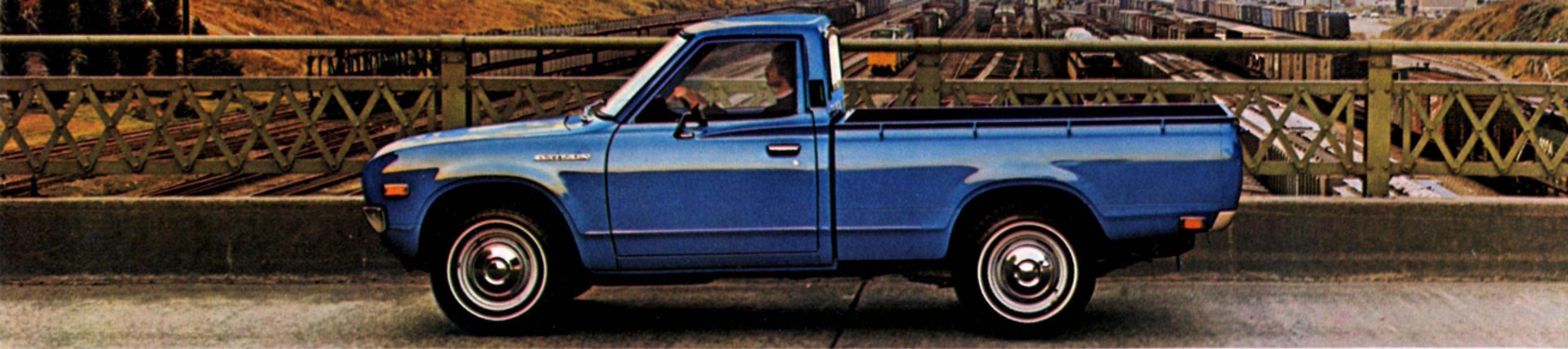
Contoured Seat. Driver and passenger relax on a new indented bench seat. Back support is human-engineered to the proper angle for long run comfort. Deep foam padding and sturdy springs are upholstered in soft, durable, easy-to-clean vinyl. There's more leg room than offered in most other small trucks, too.



Big 1800cc Engine. New power for 1974 is delivered by Datsun's tough overhead cam engine. Its low-friction design provides lots of low-end torque and top-end performance. You get the load on the road with a quick-starting automatic choke.



Heavy Duty Tubeless White Sidewall Tires. Stylish white sidewalls, rated for truck use, are mounted on wide new 4½ in. rims. Brakes are vacuum assisted for effective operation under all rated loads and operating conditions. A tandem master cylinder provides standby safety for emergencies.



SPECIFICATIONS

Dimensions & Weight Li'l Hustler Pickup

Length	169.3 in.
Width	62.6 in.
Height	60.8 in.
Wheelbase	100.2 in.
Tread, front	49.6 in.
rear	50.8 in.
Min. Road Clearance	7.9 in.
Curb Weight:	
4-speed	2360 lbs.
Automatic	2375 lbs.
Seating Capacity	2
Min. Turning Diameter	34.1 ft.

Engine: 4-cylinder, in-line SOHC, water-cooled. Bore and Stroke.....3.35 in. x 3.07 in. Displacement..... (1770cc) 108.0 cu. in. Compression Ratio.....8.5:1 Carburetion...Hitachi DCH 340. Automatic choke, Exhaust Gas Recirculation system.

Cooling System: Pressurized radiator with centrifugal water pump. Pellet type thermostat. Belt-driven fan. 7.0 quart capacity.

Fuel System: Two-barrel, down-draft carburetor. Mechanical diaphragm fuel pump. Paper element type air cleaner. Fuel tank capacity 11.9 gal.

Electrical System: 12V, 60 Amp/Hr. battery, 35 Amp. alternator, magnetic shift starter motor.

Lubrication System: Full pressure feed, full flow cartridge type oil filter and trochoid gear type oil pump. Oil capacity 4.5 quarts (with filter).

Clutch: Dry single plate, diaphragm-spring clutch. Hydraulically operated.

Transmission: Manual: All-synchromesh on forward gears. 4 speeds with floor gearshift. Automatic: Fully automatic transmission with torque converter. 6-position floor selector.

Gear Ratios	Manual	Automatic
	4-speed	3-speed
1st.....	3.59.....	2.46
2nd	2.25.....	1.46
3rd.....	1.41.....	1.00
4th.....	1.00.....	—
Rev.....	3.66.....	2.18

Final gear: Hypoid type. Manual transmission ratio 4.37:1. Automatic transmission ratio 4.62:1.

Suspension and Axle: Front: Independent torsion bar with tension rods, telescopic shock absorbers and stabilizer bar. Rear: Semi-elliptic leaf springs with shock absorbers. Semi-floating rear axle.

Wheels & Tires: 4½J-14 steel disc wheels. 6.00-14 heavy duty, tubeless, white sidewall tires.

Steering: Safety padded steering wheel with horn button. Recirculating ball type steering gear. Gear ratio 19.8.

Brakes: Hydraulic power-assist drum type front and rear with 4.5 in. vacuum servo (Master-Vac). Tandem master cylinder. Mechanical parking brake operates on rear wheels. Front 10.0 in. Rear 10.0 in.

Body: All steel two-piece construction, cab and rear body. Full vinyl upholstery. Two-stage door hinges. Seat belt anchorages, front and rear. Laminated anti-glare windshield glass. Curved tempered glass side windows. All steel bed.

Frame: Welded ladder-lattice construction.

Instruments: Speedometer with odometer. Temperature gauge, fuel gauge, charge warning light, engine oil pressure warning light and high beam warning light. Seat belt warning light and parking brake warning light.

Standard Equipment: Four sealed-beam head lights. Direction indicators (self-cancelling). Side marker lights. Parking lights. License plate light. Backup lights. Courtesy dome light. Anti-glare rear view mirror. Ash tray. Package tray. Two-speed electric wipers. Windshield washer. Horn. Arm rests. Glove box. Padded sun visors. Jute and rubber floor mats. 2-speed high-capacity heater/defroster. Two inertia reel 3-point front seat belts. Anti-salt corrosion covers for wiring harness terminals. 4-speed transmission. Vinyl upholstery and door trim panels. Flow-through ventilation. White

sidewall truck tires. Full wheel covers. Cigaret lighter. 4-cylinder SOHC, 5-main-bearing 1770cc engine. Power assisted front brakes. Engine compartment lamp.

Safety Features: Fresh air heating and defrosting system. Padded sun visors. Padded instrument panel. Ignition key buzzer. Engine emission control. Safety glass. Side marker lights. 4-way flasher lights. Backup lights. Parking lights. Long life antifreeze coolant. 3-point seat belt.

Optional Equipment: Fully automatic 3-speed transmission. Factory approved, dealer-installed air conditioning. AM radio. AM/FM radio. AM/FM stereo radio. Front bumper chrome guard. Rear step bumper. Tubular rear protective overrider. Li'l Hustler side stripe. Grab handles. Tarpaulin cover.

Ask your dealer for full list of all the options engineered and approved for your Li'l Hustler Pickup.

Specifications and prices subject to change without notice.

DATSUN

FROM NISSAN WITH PRIDE